



SWTII series oil-free screw compressor
SWTII 75-400 SERIES

FUSHENG INDUSTRIAL CO., LTD

HEAD OFFICE

No. 172, Sec.2, Nanjing E. Rd., Zhongshan Dist.,
Taipei City 104, Taiwan (R.O.C)
TEL: (+886) 2-2507-2211 FAX: (+886) 2-2504-7870

FACTORY (SALES OFFICE)

No. 60, Sec. 2, Guangfu Rd., Sanchong Dist.,
Taipei City 241, Taiwan (R.O.C)
TEL: (+886) 2-2995-1411 FAX: (+886) 2-2995-7925
Mail: machinery.sc@fusheng.com
Website: <http://www.fusheng.com>

FUSHENG (VIETNAM)

No. 06, 3A Road, Bien Hoa Industrial Zone II,
Dong Nai, Vietnam
TEL: (+84) 251-383-4566 FAX: (+84) 251-383-4599
Mail: sales@fusheng.com.vn
Website: <http://www.vn.fusheng.com>

FUSHENG (THAILAND)

140/1-2 Moo.12 Soi.9/1 Kingkaew Rd., T.Rachathewa,
A.Bangplee, Samutprakarn 10540, Thailand
TEL: (+66) 2-312-4547 FAX: (+66) 2-312-4530
Mail: sales.fsth@fusheng.com
Website: <http://www.th.fusheng.com>

FUSHENG (MALAYSIA)

No.08, Jalan Para U8/103, Metropolitan Business Park,
Seksyen U8, Bukit Jelutong, 40150 Shah Alam,
Selangor Darul Ehsan, Malaysia
TEL: (+60) 3-7832-3952 FAX: (+60) 3-7832-1954
Mail: fsmy_sales@fusheng.com
Website: <http://www.my.fusheng.com>

FUSHENG (INDONESIA)

Taman Tekno Blok H-9/23 - 25, Bumi Serpong Damai Sector XI,
Tangerang 15314, Indonesia
TEL: (+62) 21-2275-6671 FAX: (+62) 21-2275-6672
Mail: info.indonesia@fusheng.com
Website: <http://www.id.fusheng.com>

Distributor/Sales Representative



SWT(II)-10707-112A000-E1



SWTII series oil-free screw compressor
SWTII 75-400 SERIES





Pursuing Excellence, Enriching Life

Fusheng has always adhered to the philosophy of “providing excellent products and services through innovation” in the optimization of production design manufacturing processes, and customer service with the ISO9001 quality management system. We believe our “visible quality process.” is the key. Our products are sold in more than 60 countries around the world and have earned a notable reputation for providing extraordinary added value to our customers.

To internationalize our marketing coverage, we have established production facilities in Taiwan, China(Beijing, Shanghai, Zhongshan). Vietnam, the U.S(Pittsburg, St. Louis). Germany and Spain, as well as branch offices in Thailand, Malaysia and Indonesia. Our well-established distribution channels ensure the highest quality service to our valued customers-worldwide.

Our continuous pursuit of precision and perfection, the drive for optimum quality, and exceedingly high expectations for personable and enthusiastic customer service, will always be our ultimate goals and measures of success. We believe our sincere commitment to these principles will benefit and enrich people's lives and bring a higher standard of excellence to the industry.

SWTII SERIES

SWTII series oil-free screw compressor

Unique design optimizes efficiency

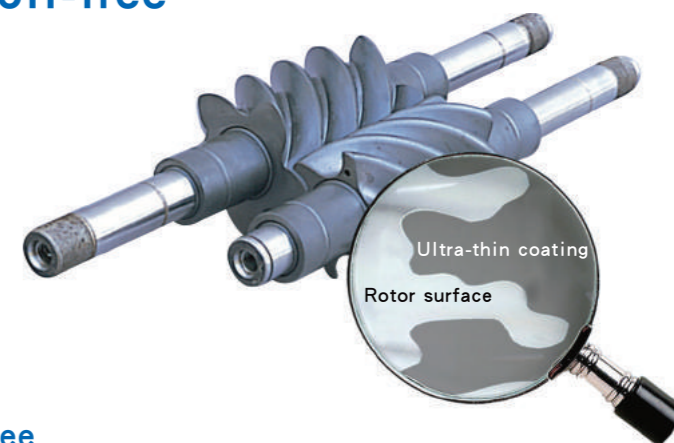
Our design minimizes pressure drop, optimizes cooling effects, and minimizes unnecessary pressure loss and heat consumption. This series of unique designs allows you to use the SWTII series of oil-free screw air compressors to obtain greater gas production. This not only means energy savings, but also the air compressor is operating in a most reliable way.

Create the ultimate effect of oil-free

Ultra-thin coating

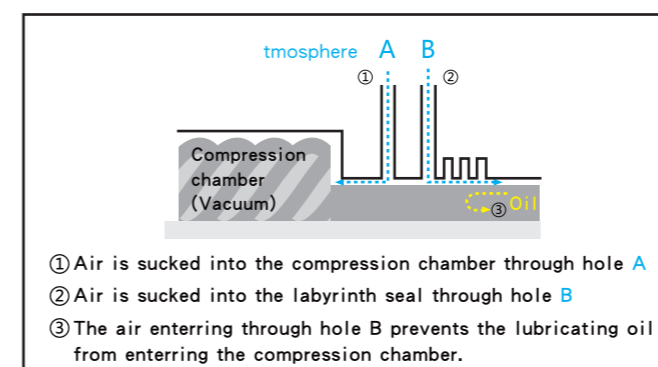
We use ultra-thin coating of international patented technology, which shows amazing adhesion and durability under the relevant test, and the light weight of the coating itself prevents the possibility of shedding.

As a non-contact transmission, the gap of the rotor is precisely controlled to the best accuracy, and the air leakage area in the compression chamber is controlled to a minimum.



Completely oil-free compression guarantee

exclusive patented "2 atmospheric vent holes structure" prevents lubricating oil from entering the compressed air chamber through the shaft seals, even if unloading for a long time, the compression chamber is maintained 100% oil free.



High-strength bearing

With special anti-friction bearings, it can easily carry all loads and optimize the mechanical design so that the bearing life is further guaranteed.

High grade gear

High-grade precision gears are used, and an improved seal is installed at the input end of the drive gear to prevent oil from penetrating into the compression chamber and ensure that the compressed air is completely oil-free.

Independent auxiliary pump

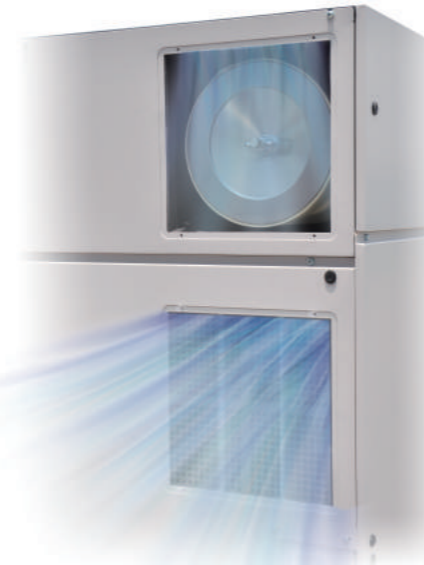
Make sure that the supply compressor has sufficient oil pressure when starting and stopping.



Energy-saving overall design

Intake duct

- The design of independent air inlet box and air inlet duct minimizes the pressure drop of the air intake ; the external air inlet ensures the air inlet temperature and improves the compression efficiency.
- The air passes through a silencing channel before entering the air filter, minimizing the intake noise.

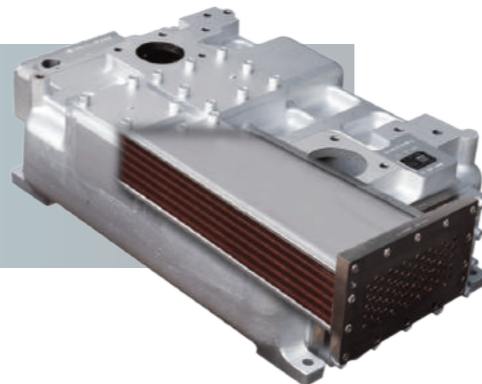


Large Diameter Low Pressure Drop - Intake Valve

Reduce pressure modulating band Utilizing a pneumatic diaphragm action butterfly valve for unloading, Pressure band is decreased from 0.1MPa to 0.05MPa, eliminating unnecessary energy consumption by preventing unnecessary pressure rise.

Large capacity low pressure drop-cooler

The increased cooling area not only provides a very high heat transfer efficiency, but also provides sufficient margin for the compressed air to pass through the cooler at once. The extremely low pressure drop results in higher compression efficiency.

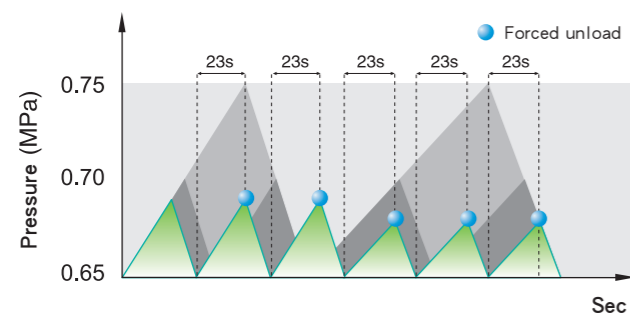


Integral structure reduces mechanical losses

- Direct mounting of motor on gear box.
- No coupling design to reduce mechanical loss.

Condensate draining solenoid valves

- They drain condensate forcibly by timers and solenoid valves, which reduce air loss as well as ensuring condensate drainage.



Energy saving logic optimizes operation

- Has an energy-saving logic function to force the compressor to unload after the loading time has exceeded a minimum load/unload cycle (every 23 seconds).
- Reduce pressure band by forced unloading to eliminate unnecessary energy consumption.

Environmental protection, low noise

Unique noise mask and silencer eliminates noise from the source. The host, motor and cooler assembly are housed on the same set of shock mounts and are equipped with high-efficiency shockproof pads to minimize vibration.



Standard packaged oil mist filter

- Filter out oil mist from gearbox
- Included in standard package, eliminates extra installation of external breather pipe
- Over 99% high oil separation efficiency
- Filtered oil return into the tank, avoiding oil wastage



Easy maintenance



Simple day-to-day management by the electronic controller

- Electronic controller with large LCD Panel can simplify daily operation and management. Monitor various information on air compressor status; display maintenance, alarm, emergency stop information and their corresponding countermeasures; helps prevent emergency stop and rectify it quickly and effectively.
- Comes in standard package for the full range, with complete functionality. Display daily and monthly data record in charts for convenient reviewing.

The maintenance space is convenient enough

The design of the unit's housing and the arrangement of the internal parts are in order. It is only necessary to open the door panel to reach the maintenance point. This makes the maintenance work easy and guarantees the continuity of production.

Fin type cooler for convenient cleaning

- Cooling water flows through tube side for easy cleaning of scale formation.
- Cooling water flow uniformly, resulting in minimal impurity deposits and corrosion.

Convenient lubricating grease nozzle

- The grease can be easily filled just by opening a door.
- Without touching the machine, the body does not have to extend into the chassis.

SWTII SERIES

SWTII series oil-free screw compressor

SWTII Constant Frequency Air Cooling Parameters

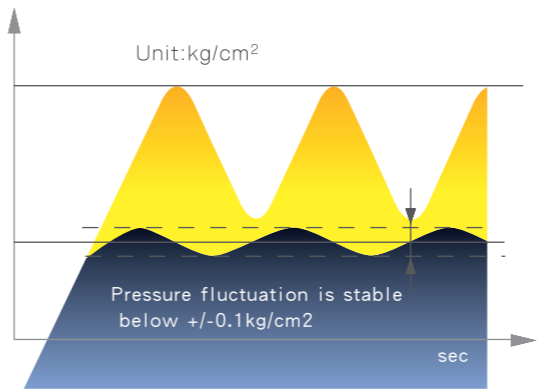
	Dis. Air Volume	Dis. Press	Main Motor	Noise	L	W	H	Weight
	m³/min	Mpa	kW	dB(A)	mm	mm	mm	kg
SWT75AII	12.8	0.75	75	67	2010	1500	2160	2840
	10.1	0.85	75	72	1830	1400	1780	2085
SWT90AII	15.8	0.75	90	68	2010	1500	2160	3080
	12.8	0.85	90	70	2010	1500	2160	3080
SWT100AII	17.0	0.75	100	69	2010	1500	2160	3080

SWTII Constant Frequency Water Cooling Parameters

	Dis. Air Volume	Dis. Press	Main Motor	Noise	Cooling Water	L	W	H	Weight
	m³/min	Mpa	kW	dB(A)	m³/h	mm	mm	mm	kg
SWT75WII	13.0	0.75	75	65	6.5	2150	1335	1890	2850
	10.3	0.85	75	68	6.4	1730	1170	1680	2135
	10.3	1.0	75	69	6.4	1730	1170	1680	2135
SWT90WII	16.0	0.75	90	66	8.0	2150	1335	1890	3080
	14.1	0.85	90	68	8.0	2150	1335	1890	3080
	12.9	1.0	90	71	8.0	2150	1335	1890	3080
SWT100WII	17.2	0.75	100	67	8.8	2150	1335	1890	3080
	16.0	0.85	100	69	8.8	2150	1335	1890	3080
	14.1	1.0	100	71	8.8	2150	1335	1890	3080
SWT110WII	17.1	0.85	110	69	9.1	2150	1335	1890	3230
	16.0	1.0	110	72	9.1	2150	1335	1890	3230
SWT120WII	21.6	0.75	120	67	11.6	2900	1565	1860	4330
	17.1	1.0	120	72	9.5	2150	1335	1890	3330
SWT132WII	23.9	0.75	132	68	12.9	2900	1565	1860	4350
	21.6	0.85	132	70	12.9	2900	1565	1860	4350
	26.5	0.75	145	68	13.3	2900	1565	1860	4450
SWT145WII	23.8	0.85	145	70	13.3	2900	1565	1860	4450
	21.5	1.0	145	73	13.3	2900	1565	1860	4450
	28.4	0.75	160	69	15.5	2900	1565	1860	4500
SWT160WII	26.4	0.85	160	71	15.5	2900	1565	1860	4500
	23.8	1.0	160	73	15.5	2900	1565	1860	4500
	32.8	0.75	180	69	17.9	2900	1565	1860	4570
SWT180WII	28.4	0.85	180	71	17.9	2900	1565	1860	4570
	26.4	1.0	180	73	17.9	2900	1565	1860	4570
SWT200WII	36.4	0.75	200	69	18.4	3250	1565	2140	5980
	33.2	0.85	200	72	18.4	3250	1565	2140	5980
SWT220WII	39.0	0.75	220	70	20.2	3250	1565	2140	6020
	36.3	0.85	220	72	20.2	3250	1565	2140	6020
	32.7	1.0	220	72	20.2	3250	1565	2140	6020
SWT250WII	43.6	0.75	250	70	22.9	3250	1565	2140	6100
	41.5	0.85	250	72	22.9	3250	1565	2140	6100
	36.3	1.0	250	72	22.9	3250	1565	2140	6100
SWT270WII	48.0	0.75	270	71	23.9	3250	1565	2140	6160
	43.5	0.85	270	73	23.9	3250	1565	2140	6160
	38.9	1.0	270	73	23.9	3250	1565	2140	6160
SWT290WII	48.0	0.85	290	73	24.8	3250	1565	2140	6280
	41.1	1.0	290	73	24.8	3250	1565	2140	6280
SWT300WII	53.5	0.75	300	75	33.0	3700	2000	2395	7950
	50.0	0.85	300	75	33.0	3700	2000	2395	7950
SWT315WII	57.2	0.75	315	75	35.4	3700	2000	2395	8030
	53.4	0.85	315	75	35.4	3700	2000	2395	8030
SWT355WII	63.7	0.75	355	75	39.0	3700	2000	2395	8110
	60.0	0.85	355	75	39.0	3700	2000	2395	8110
SWT400WII	70.0	0.75	400	75	43.2	3700	2000	2395	8190
	67.0	0.85	400	75	43.2	3700	2000	2395	8190

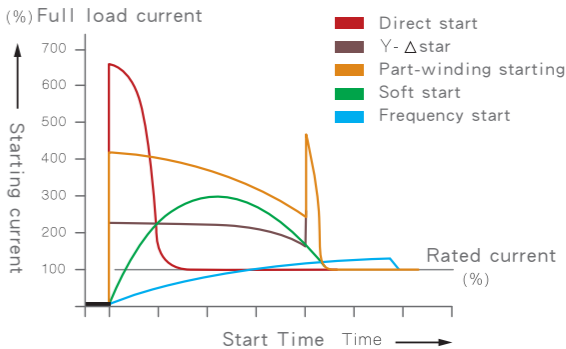
Constant pressure gas supply

Variable frequency control instantly responds to changes in air volume used by customers. Supply air pressure fluctuations are stable below +/-0.1kg/cm2, which can significantly save running electricity tariffs by up to 35%.



Variable frequency star

Variable frequency soft start, smooth linear operation, no traditional direct start or star delta startup current, reduce the impact on the circuit, power, greatly extend the life of the contactor, motor and compressor body.



SWTII VSD Air Cooling Parameters

	Dis. Air Volume	Dis. Press	Main Motor	Noise	L	W	H	Weight
	m³/min	Mpa	kW	dB(A)	mm	mm	mm	kg
SWTV75AII	12.8	0.75	75	67	2470	1500	2160	2976
	10.1	0.85	75	72	2385	1400	1780	2290
SWTV90AII	15.8	0.75	90	68	2470	1500	2160	3140
	12.8	0.85	90	70	2470	1500	2160	3140
SWTV100AII	17.0	0.75	100	69	2470	1500	2160	3190
	15.7	0.85	100	71	2470	1500	2160	3190

SWTII VSD Water Cooling Parameters

	Dis. Air Volume	Dis. Press	Main Motor	Noise	Cooling Water	L	W	H	Weight
	m³/min	Mpa	kW	dB(A)	m³/h	mm	mm	mm	kg
SWTV75WII	13.0	0.75	75	65	6.5	2600	1335	1890	2976
	10.3	0.85	75	68	6.4	2120	1170	1680	2310
	10.3	1.0	75	69	6.4	2120	1170	1680	2310
SWTV90WII	16.0	0.75	90	66	8.0	2600	1335	1890	3140
	14.1	0.85	90	68	8.0	2600	1335	1890	3140
	12.9	1.0	90	71	8.0	2600	1335	1890	3140
SWTV100WII	17.2	0.75	100	67	8.8	2600	1335	1890	3190
	16.0	0.85	100	69	8.8	2600	1335	1890	3190
	14.1	1.0	100	71	8.8	2600	1335	1890	3190
SWTV110WII	17.1	0.85	110	69	9.1	2600	1335	1890	3290
	16.0	1.00	110	72	9.1	2600	1335	1890	3290
SWTV120WII	17.1	1.0	120	67	9.5	2600	1335	1890	3330
	21.6	0.75	120	72	11.6	2900	1565	1860	4520
SWTV132WII	23.9	0.75	132	68	12.9	2900	1565	1860	4550
	21.6	0.85	132	70	12.9	2900	1565	1860	4550
	26.5	0.75	145	68	13.3	2900	1565	1860	4650
SWTV145WII	23.8	0.85	145	70	13.3	2900	1565	1860	4650
	21.5	1.0	145	73	13.3	2900	1565	1860	4650
SWTV160WII	28.4	0.75	160	69	15.5	2900	1565	1860	4720
	26.4	0.85	160	71	15.5	2900	1565	1860	4720
	23.8	1.0	160	73	15.5	2900	1565	1860	4720
SWTV180WII	32.8	0.75	180	69	17.9	2900	1565	1860	4815
	28.4	0.85	180	71	17.9	2900	1565	1860	4815
	26.4	1.0	180	73	17.9	2900	1565	1860	4815
SWTV200WII	36.4	0.75	200	69	18.4	3250	1565	2145	6250
	33.2	0.85	200	72	18.4	3250	1565	2145	6250
	39.0	0.75	220	70	20.2	3250	1565	2145	6310
SWTV220WII	36.3	0.85	220	72	20.2	3250	1565	2145	6310
	32.7	1.0	220	72	20.2	3250	1565	2145	6310
SWTV250WII	43.6	0.75	250	70	22.9	3250	1565	2145	6390
	41.5	0.85	250	72	22.9	3250	1565	2145	6390
	36.3	1.0	250	72	22.9	3250	1565	2145	6390
SWTV270WII	48.0	0.75	270	71	23.9	3250	1565	2145	6450
	43.5	0.85	270	73	23.9	3250	1565	2145	6450
	38.9	1.0	270	73	23.9	3250	1565	2145	6450
SWTV290WII	48.0	0.85	290	73	24.8	3250	1565	2145	6570
	41.4	1.0	290	73	24.8	3250	1565	2145	6570

*Optional permanent magnet motor (IPM). Please contact Fusheng for details.